

WHY LANDSCAPE APPROACHES MAKE BUSINESS SENSE

Sustainability beyond a single supply chain







Business activities and communities are not isolated but part of a wider landscape in which they rely on the same resources for their activities. They are interdependent and affect each other.

A landscape approach is a multi-stakeholder and cross-sectoral process that helps businesses and communities achieve sustainability goals.

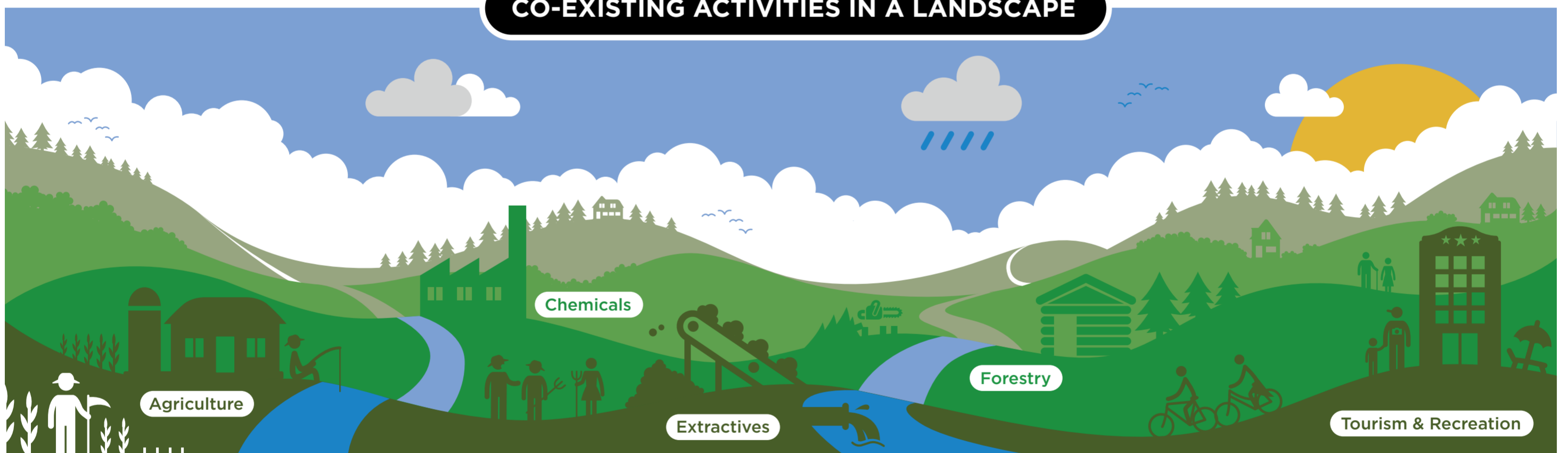
BENEFITS TO BUSINESS

 <p>Securing long-term supply while maintaining ecosystem services</p>	 <p>Improving stakeholder relations to retain license to operate</p>	 <p>Reducing costs through verified sustainable sourcing and improving product traceability</p>	 <p>Meeting buyer requirements and helping to fulfil corporate commitments</p>	 <p>Leading to improved regulations and incentives for sustainable practices</p>	 <p>Mobilizing new investments</p>	 <p>Helping to identify cost-saving opportunities</p>
---	---	--	--	---	---	--

SUSTAINABILITY RELATED RISKS

 <p>Deforestation</p>	 <p>Social conflict</p>	 <p>Changing micro-climate</p>	 <p>Water risks</p>
---	--	---	--

CO-EXISTING ACTIVITIES IN A LANDSCAPE



HOW TO IMPLEMENT A LANDSCAPE APPROACH

- 

1 Identify issues and stakeholders
- 

2 Set up a multi-stakeholder platform
- 

3 Build shared understanding
- 

4 Plan collaboratively
- 

5 Work towards effective implementation
- 

6 Monitor outcomes

WORKING TOWARDS THE SUSTAINABLE DEVELOPMENT GOALS

<p>2 NO HUNGER</p> 	<p>6 CLEAN WATER AND SANITATION</p> 	<p>12 RESPONSIBLE CONSUMPTION</p> 	<p>13 CLIMATE ACTION</p> 	<p>14 LIFE BELOW WATER</p> 	<p>15 LIFE ON LAND</p> 
--	---	---	--	--	--